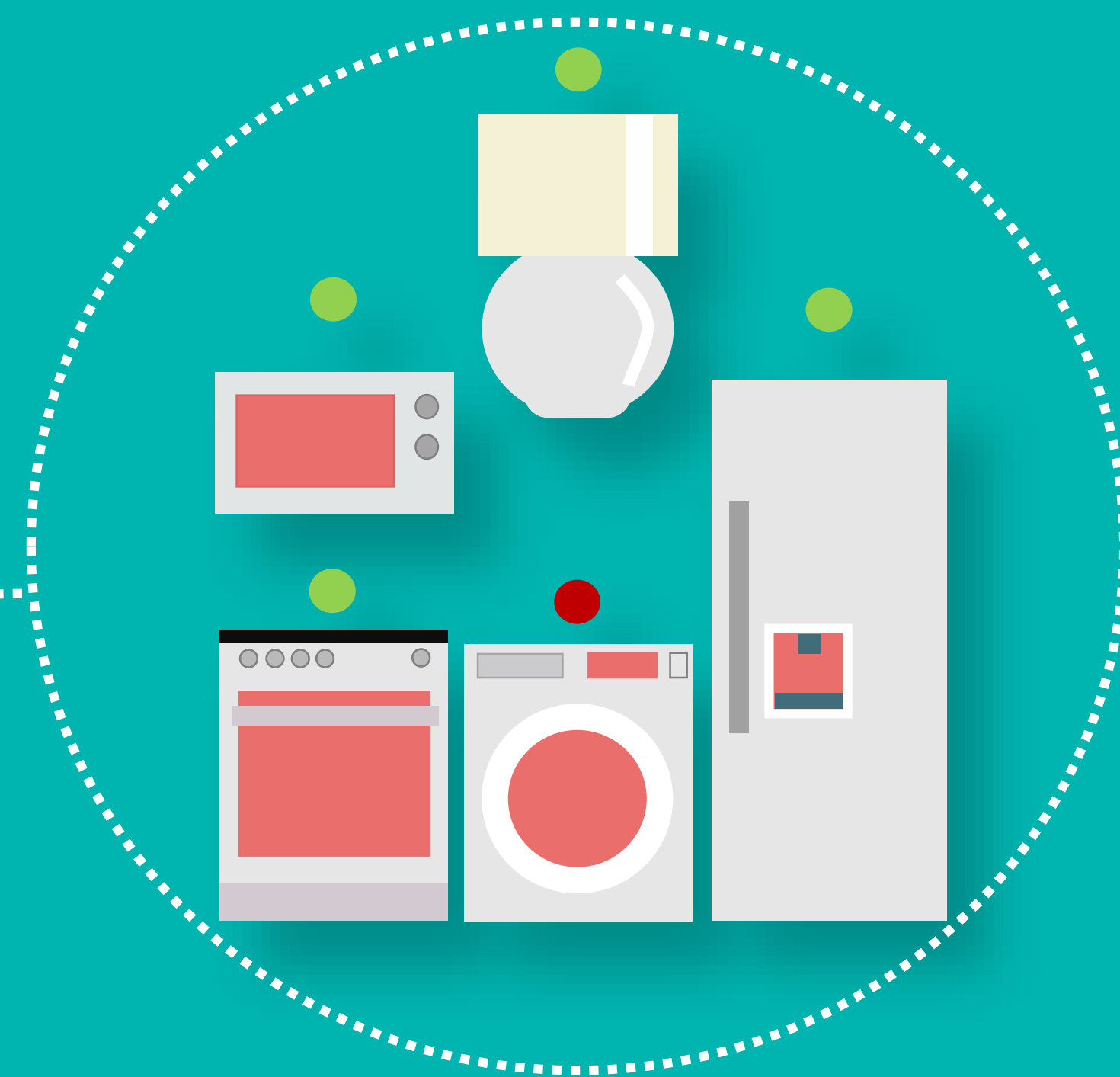
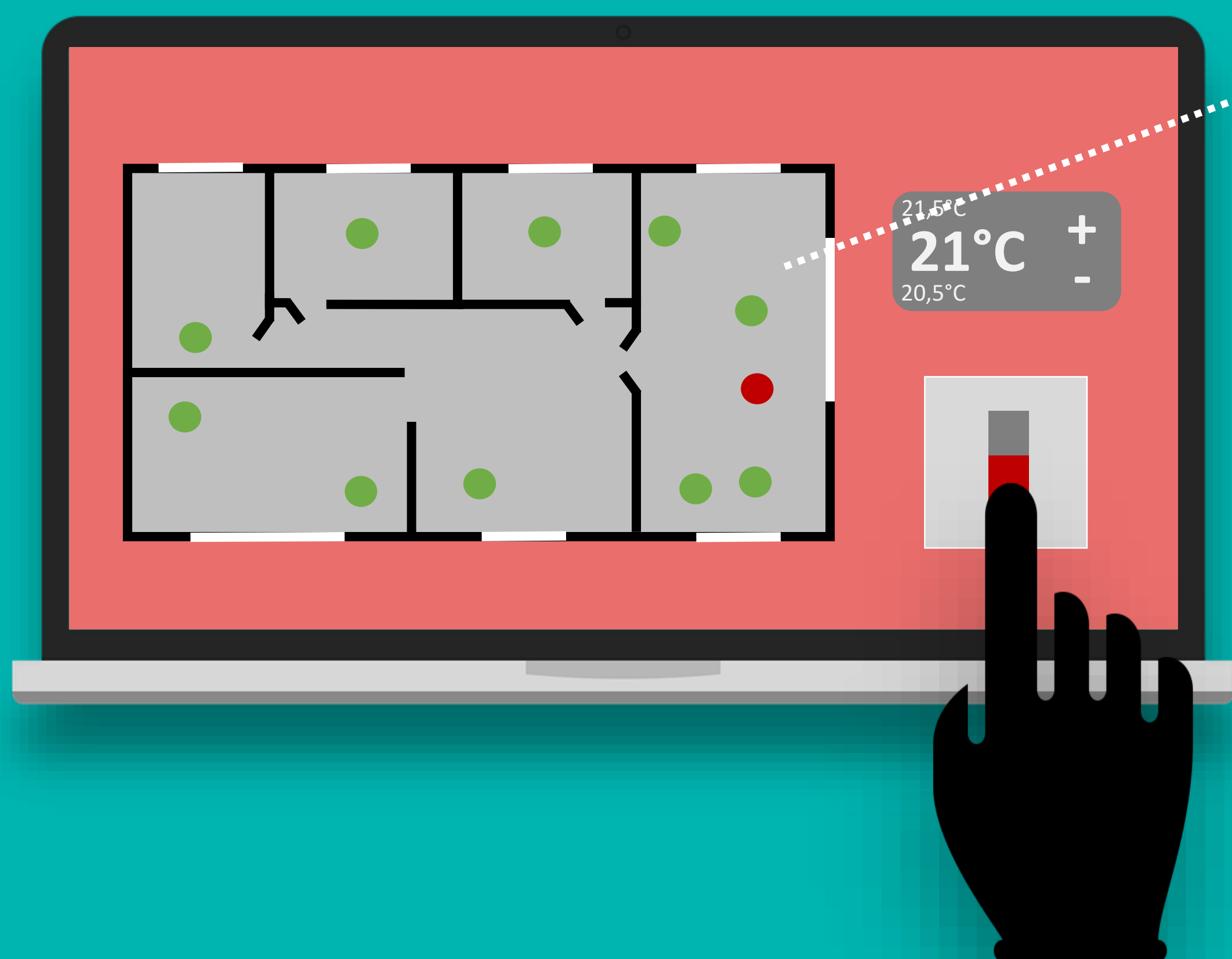


MONITORING AND CONTROLLING INTERFACE



The user can let the system handle everything automatically, or the user can manually turn on & off from anywhere.

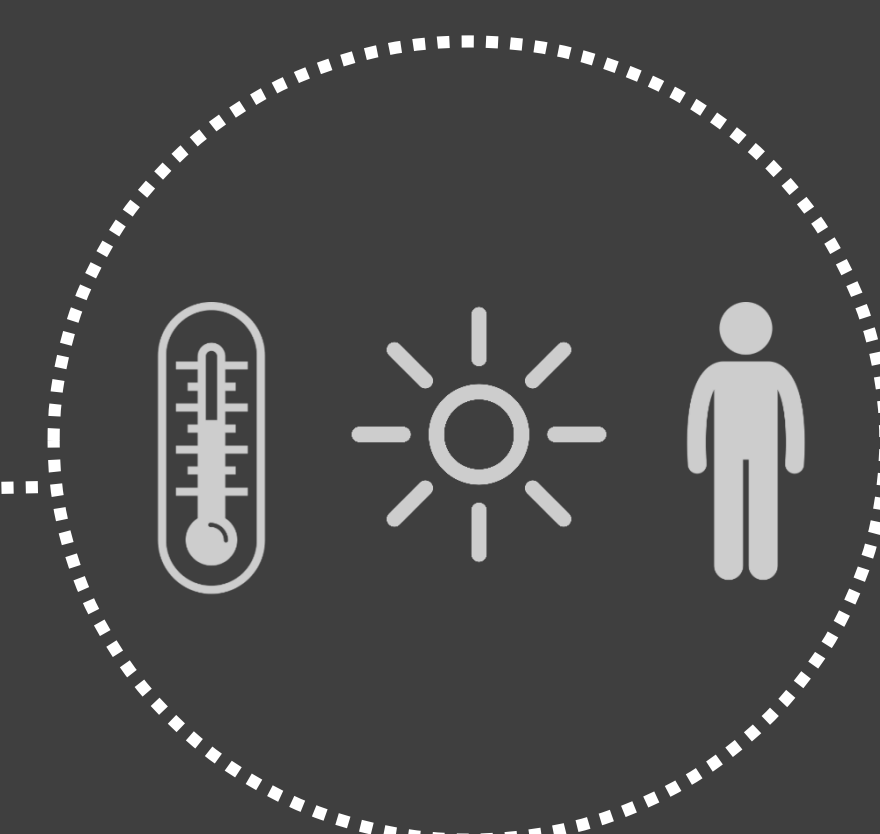
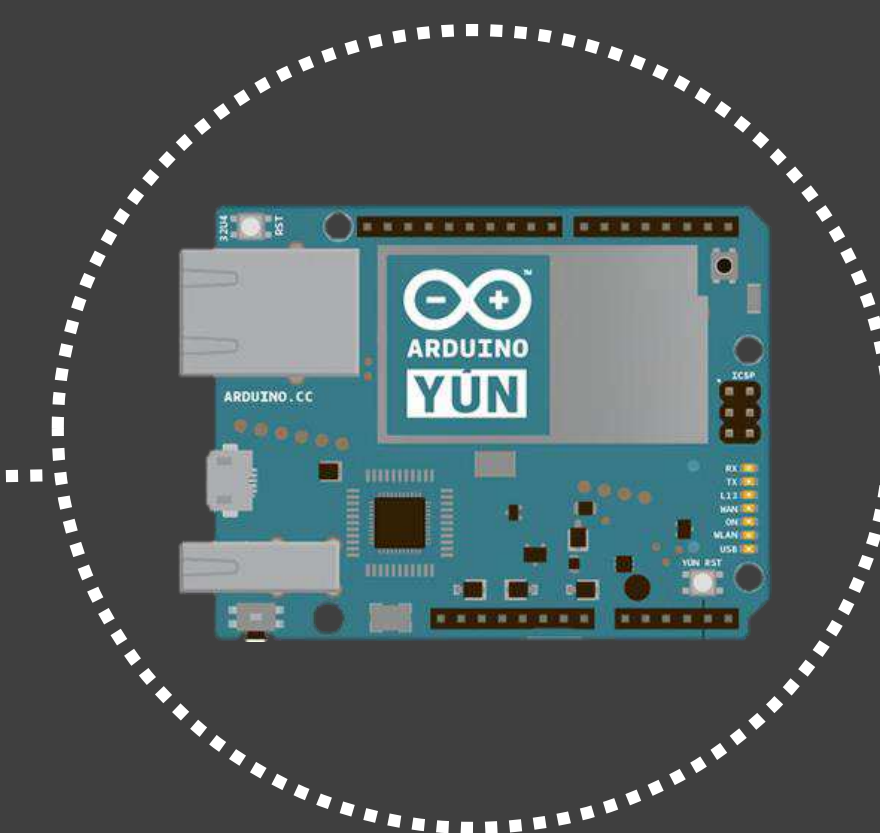
The automatic mode considers the consumption & various other parameters from the hub to take care of any situation smartly at the right time

Possibility of adding extra features to have a complete smart home



Electric consumption data sent throughout WIFI or ethernet to a server for data processing

The PiiBOX is an Arduino Yùn based system for each room



The PiiBOX contains sensors that retrieve data. The PiiBOX includes a temperature, a photoresistor and an ultrasound sensor

CENTRALISING DATAS TO HAVE A SMART HOME

